

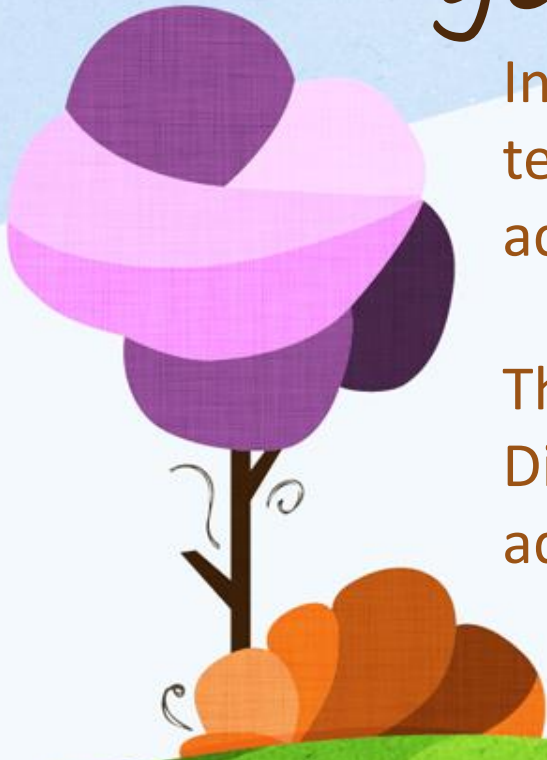


Autumn Transition Package

Every year is a transition year ...

In the first few weeks when pupils return to school in September, the team at VIPS Holborough Lakes, will be focused on efficiently and accurately identifying gaps in learning.

The Autumn Transition Package uses the PiXL methodology of Diagnosis, Therapy, Testing and Revisiting in effectively identifying and addressing pupils' gaps.



Our Focused Areas

READING

- *Word reading and decoding and understanding*
- *Retrieval*
- *Inference*

MATHEMATICS

- Number and place value
- Addition and Subtraction
- Multiplication and Division

GPS

- Sentence composition
- Punctuation
- Grammatical terms and word classes

Autumn Transition Package

- Diagnostic Assessment

- identify gaps
- Teach to gaps using therapies and/or other resources

- Impact Assessment

- Plan in revisiting across the whole curriculum

DIAGNOSIS

THERAPY

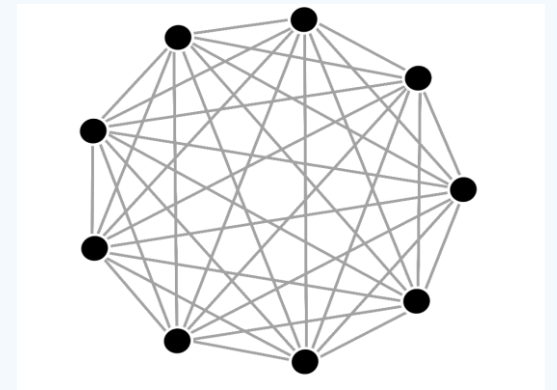
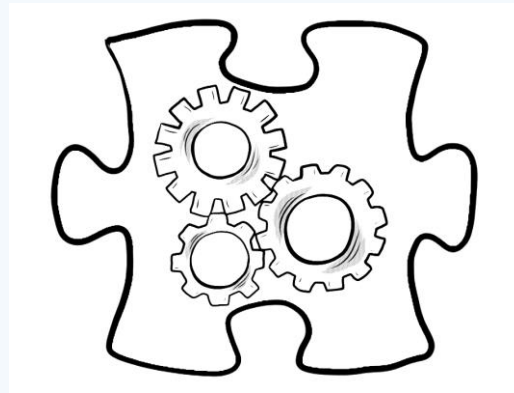
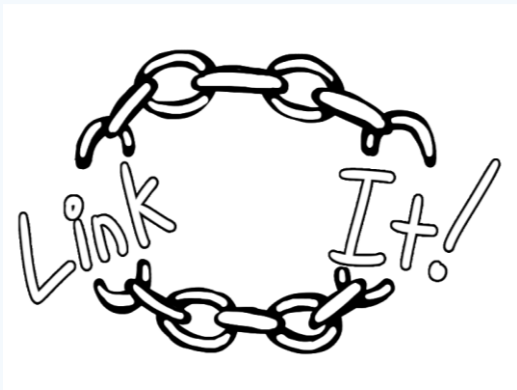
TESTING

REVISITING

Repeat for next
Characteristic on the TCC.

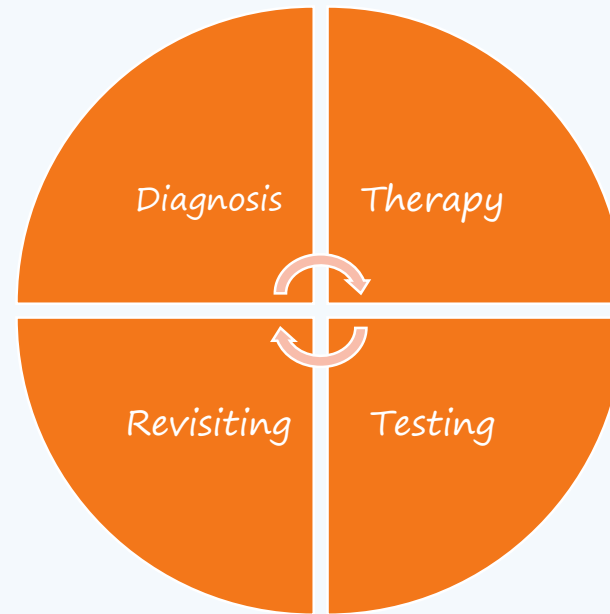
Therapies

- **After each assessment, there** will be therapies that teachers will deliver to support in closing the identified gaps.
- Therapies are based on **teach-model-apply** and where appropriate link to relevant visual or practical resources.



Impact Assessments

- Impact Assessments follow the **same format** as the **Diagnostic Assessments**.
- They are designed to be used to **determine whether pupils' gaps have been closed** following the use of the therapies for that particular Characteristic.



This is our Suggested Timetable

Week 1 wb 7th	Number and Place Value Word reading, decoding and understanding
Week 2 wb 14th	Sentence composition
Week 3 wb 21st	Addition and Subtraction Retrieval
Week 4 wb 28th	Punctuation
Week 5 wb 5 th	Multiplication and division Inference
Week 6 wb 12th	Grammatical terms and word classes
Week 7	